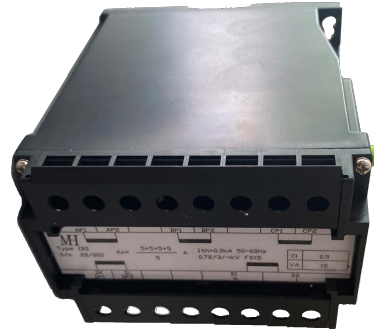




**IBS Summation Current Transducer**  
 For measurement  
 Class 0.5, 1, 3



**APPLICATION**

The IBS summation current transducer sums up the real time values of different current in a network, providing a proportional AC current. Thus, it is suitable for measuring the total current in lines either feeding several loads, or fed by several generators or power transformers connected in parallel. In these cases it can be used for measuring active or reactive power, energies and total power factor of the system.

To achieve that, several measuring current transformer are used, one for each current, with their secondary windings connected to the primary windings of the summation current transducer. All the current transformer must be connected to the same phase.

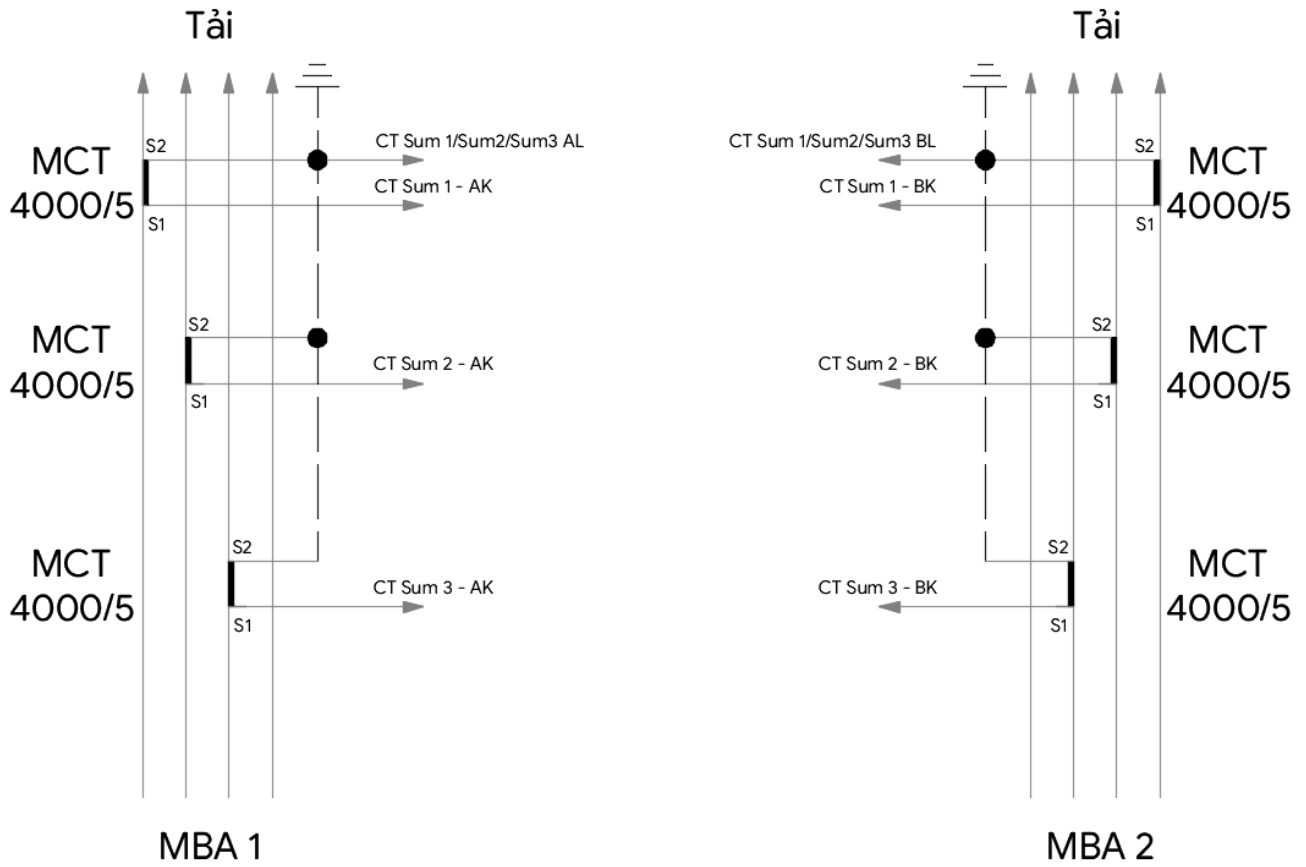
The standard IBS is prepared for current transformers of the same transformation ratio. Otherwise specific.

**ELECTRICAL SPECIFICATION**

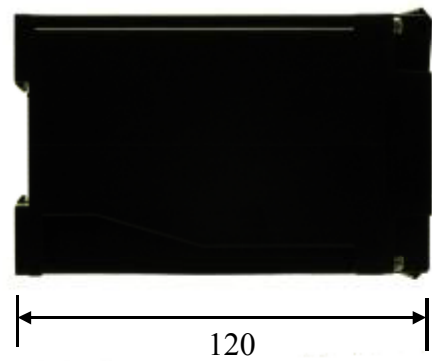
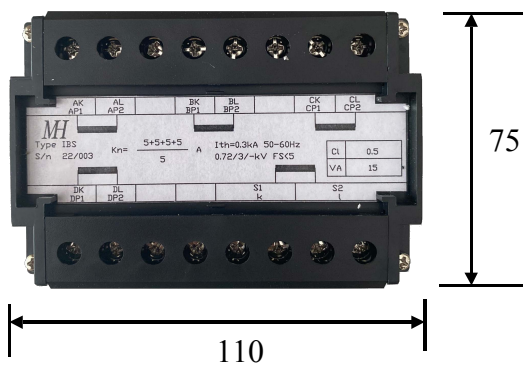
Output range:	0 - 5A
Frequency range:	50 - 60 Hz
Highest voltage for equipment:	720V
Rated insulation level:	3kV, 50Hz during 1 minute
Rated continuous thermal current:	1.2 times rated current
Rated short-time thermal current ( $I_{th}$ ):	60 times rated current
Rated dynamic current ( $I_{dyn}$ ):	2.5 times $I_{th}$
Instrument security factor (FS):	less than 5
Internal burden:	5 VA
Thermal class of insulation, according to IEC-85:	E (120°C)

Type		IBS		
Rated of Primary Current	Output Range	Rated Output (VA)		
		Class 0.5	Class 1	Class 3
IBS 2 (5+5)	5A	5	10	15
IBS 3 (5+5+5)				
IBS 4 (5+5+5+5)				
IBS 5 (5+5+5+5+5)				

## CONNECTION DIAGRAM



## DIMENSIONS (in mm)



Authorise Agent: